

BENZ A45 AMG BOOST ADAPTOR

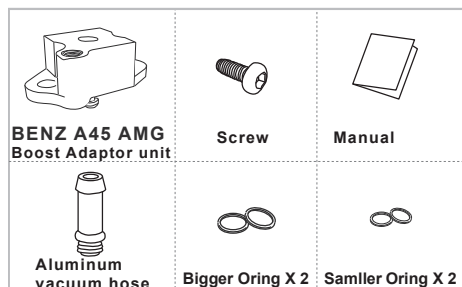
INSTRUCTION MANUAL

Welcome

Thanks for purchasing the BENZ A45 AMG Boost Adaptor, please read the manual completely before installation!

Contents

The following pictures may be different from reality and only for reference.



Character

- Designed for BENZ A45 AMG.
- To install the boost gauge without cutting any pipe in the engine bay to keep the parts look as factory made.
- Made of Aluminum with tiny size and light-weight.
- Anodized surface can be anti-resistance.
- Easy to install by DIY.
- The groove of aluminum vacuum hose can hook the pipe.

Importance

- Please read manual completely before installing BENZ A45 AMG Boost Adaptor that can help you go through the installation steps easily.
- It's highly recommend to consult professionals or workshop to install if you are not familiar with the engine bay, because the installation requires professional knowledge of engine system.
- The damage or unexpected result due to incorrect installation is out of the liability of our warranty, such as reversed connection of the electrode poles, or damaged with abnormal usage. Any loss of personal or property due to incorrect usage is out of our liability of responsibility or compensation.
- MUST operate or install this product in the ventilation space, in case of injured or death accident because of carbon carbon monoxide poisoning.
- Please turn off the engine off at least 1 hour before installation to ensure safety and avoid the check light on when disassemble any parts.
- Please do not rework, disassemble or modify any part of this product to make sure the warranty is valid.
- All the procedure is in queue to ensure the correct installation and not damage the pipe and other parts.

Notice

- MUST wait for at least one hour to make sure the oil is cooled enough to avoid injured by oil with high temperature explored when unload the oil filter.
- Please wear safety glove to prevent heat injured and hurt by pointed instruction.
- This product is only for BENZ A45 AMG, it doesn't work on other engine.
- Please assemble all the pipe completely and firmly.

Installation

The preparation before installation

Turn Off the engine

wait for at least 1 hour

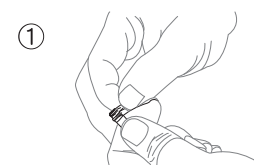


Open the engine hood



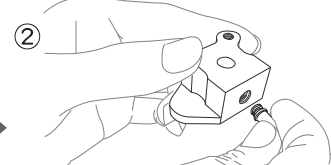
Start to install

①



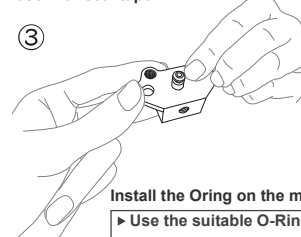
Seal the thread of aluminum vacuum hose with seal tape.

②



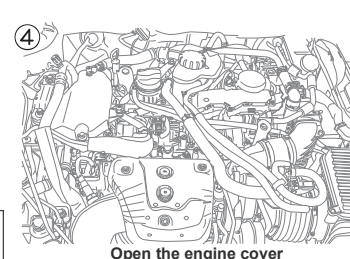
Tighten the aluminum hose into adapter

③



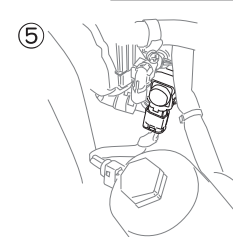
Install the O-ring on the main unit
► Use the suitable O-Ring's size that match to the sensor

④



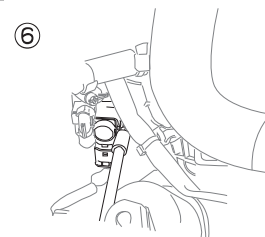
Open the engine cover

⑤



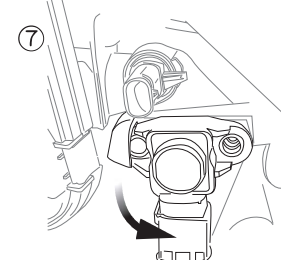
Find the pressure sensor

⑥



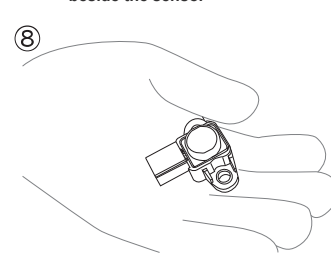
Remove the OEM screw beside the sensor

⑦



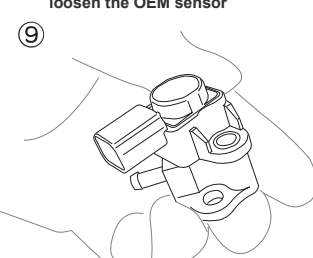
Follow the arrow direction to loosen the OEM sensor

⑧



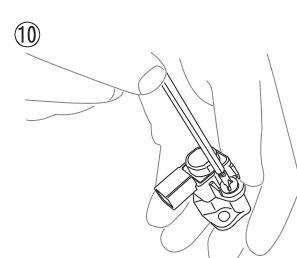
Remove the OEM sensor

⑨



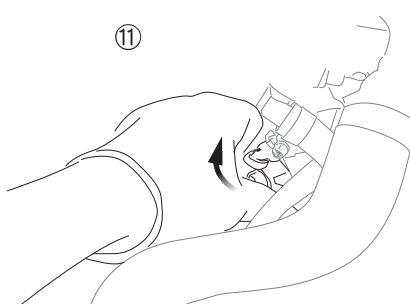
Assemble the OEM sensor to the adaptor

⑩



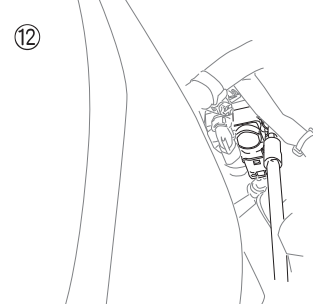
Fasten the M6 screw from accessory kits

⑪



Follow the indicated direction to install the sensor and the adaptor to the original position.

⑫



Insert the silicone tube into the aluminum hose, finish the installation