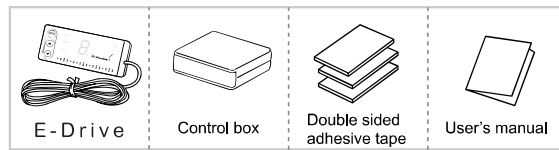


E-Drive Advance 4S

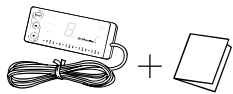
INSTRUCTION MANUAL

CONTENTS

(schematic diagram for reference)



- In transferring the product to others, please always attach with the user's manual.



FEATURES

- Anti-slip function - Easy to move the car in low friction terrain.
- Drag Racing function - increase the speed rapidly as racing mode.
- Anti-theft function - lock your pedal to prevent theft.
- DAC digital signal output providing 1000 times/sec processing speed.
- Built-in high speed processors to increase the stability and purity of the signal.
- 9 levels power mode (Po): quick accelerator response suitable for mountain road and competition use.
- 7 levels Eco modes (Ec): lower the fuel consumption suitable for city drive.

IMPORTANT NOTICE



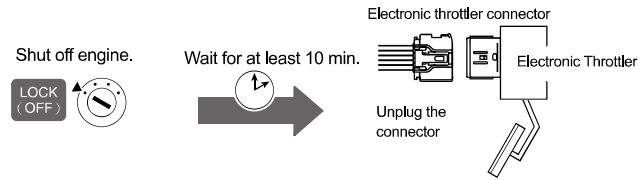
Please read all the instruction to make installation run smoothly

- Must run the initial setup after first installation, please make sure the engine is off and gear is in "P" or "N" position while setting up.
- The damage or unexpected result due to incorrect installation is out of the liability of our warranty, such as reversed connection of the electrode poles or damaged with abnormal usage. Any loss of personal or property due to incorrect usage is out of our liability of responsibility or compensation.
- Never work in a poor air ventilation space. It may cause carbon monoxide poisoned, explosion and accident.
- Please unscrew the negative pole connection of the battery before installation to prevent the part damaged or flame caused by short circuit.
- Don't scratch the coat of cables. Cable with broken coat might cause flame because of bad connection or short circuit.
- Organize the wire after installation. If wire falls scattered while driving, it may cause danger event.
- Never operate while driving. Concentrate while driving keeps you safe.
- If installation knowledge is required, contact Shadow E-Drive technician near your location.
- For DC12V vehicle only.
- Make sure the wire is well connected. If wire welded is required, please seal the welded joint with insulating tape and make sure there is no metal core of wire exposed.
- Do NOT disassemble the product or modify any of the components as it will void your warranty.
- Do not install this product in humidity environment with high temperature to avoid defect installation.
- Fragile! Hand with care. Hold the body few seconds after double-side tape pasted and make sure the body is fixed firmly.

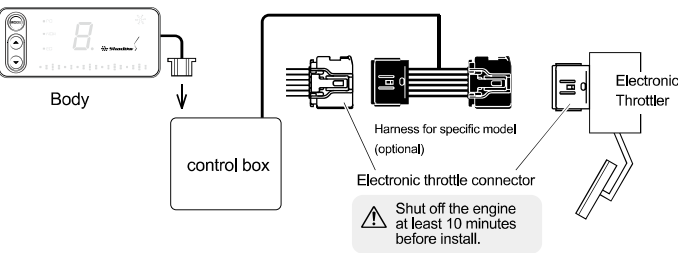
HARNESS

Preparation of installation

Shut off the engine at least 10 minutes. Otherwise the engine check light might be on after installation. (Refer to troubleshooting of engine check light)

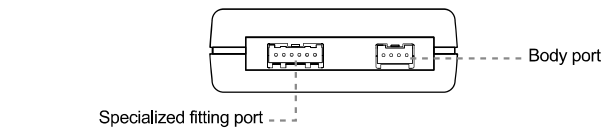


Standard cabling



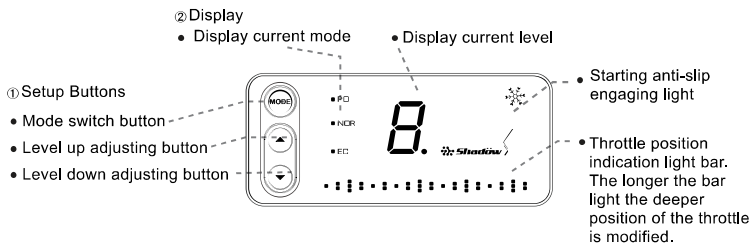
Make sure all the wires are well connected otherwise it might cause danger as wire falling while driving.

Port Diagram



SETUP

Display description



Notice

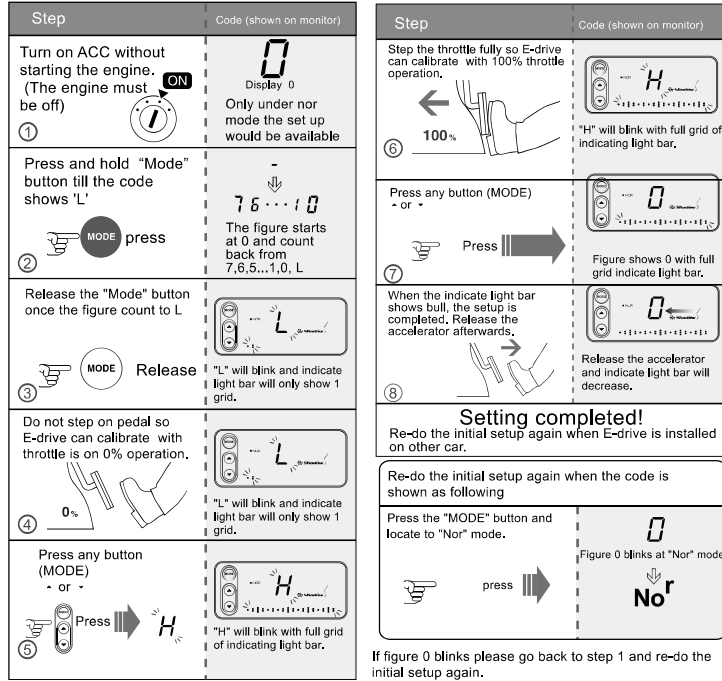
- Display is synchronize to ECU's power. The display will shut down 10sec-5min after ACC is off.

Calibration (initial setup)

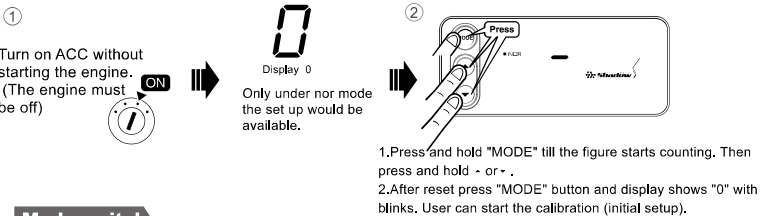
- Must complete the calibration (initial setup) after installation.
- Calibration is to modify the correct throttle signal.
- Product will not function properly without the calibration.

Initial setup instruction

- Preparation before setup
1. Make sure all the wires and fitting are well connected.
2. Turn on ACC without starting the Engine. Shift the gear to "P" or "N" position.

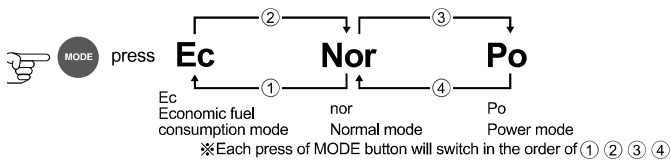


- Please reset E-Drive when it is installed on other vehicle.
- Reset to avoid car shows the defect light for engine.

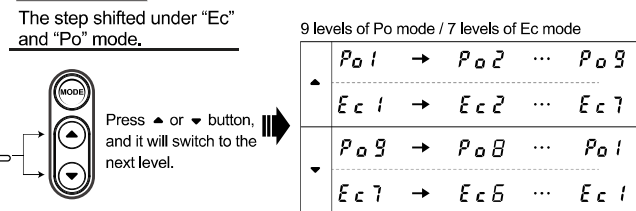


Mode switch

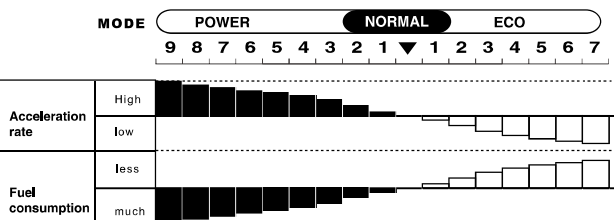
Press "MODE" button to switch the mode.



Step shift

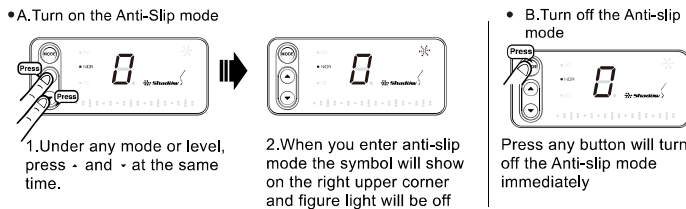


Acceleration and fuel consumption of each level

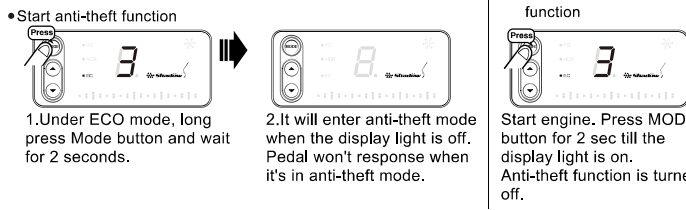


Please be aware with reverse driving when its under Po mode. The pedal will be very sensitive. Must advise the driver when the driver is not familiar with E-Drive.

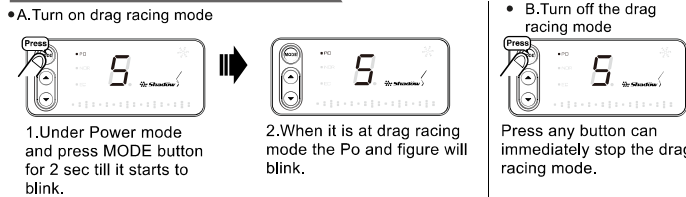
Anti-slip function setup



Anti-theft function setup



Drag racing mode setup



Warning: Under drag racing mode the pedal is extremely sensitive. Do not use this mode for reversing.

Troubleshooting

Take following information for reference when product is defect.

Symptom	Cause	Trouble shooting
No reaction when ACC is on.	Plug or harness is not well connected .	Double check every plug and harness again.
Engine check light is on	Disconnect the plug or harness before ACC is completely shut off.	Please check following note "Reset engine check light" for reference.
	No calibration performed after installation. Did not leave 10 mins after turning off the engine for product installation.	Perform the calibration (initial setup) then reset engine check light (ref as following). Please check following note "Reset engine check light" for reference.
Press MODE button the display shows 0 with blinks and stays in Nor mode.	Incorrect calibration setup .	Re-do calibration setup.

Please return all the accessory with body and harness for repair.

- Notes:
- Take following steps to reset the engine check light:
- If the engine check light is on because of incorrect installation and instruction, please try the instruction as below:
1. Please turn off engine and wait for few minutes then start engine up, the light will be off.
 2. If first solution is failed, please release the negative pole of battery and wait for 10 minutes then connect the pole.
 3. If both two methods are failed, please use the OBDII scanner (reader) to diagnosis.

Publisher : Shadow Auto
Address : NO.348 Fan-Hwa Road, Chin-Hsin Village, Hsiu-Shui, Chang Hwa, TAIWAN R.O.C
Website : www.shadowmotor.com.tw
Tel : 886-4-7681140
Fax : 886-4-7698587



Copyright © AUTO JAW CO., LTD. ALL RIGHTS RESERVED.

Made in Taiwan
ver1.00