

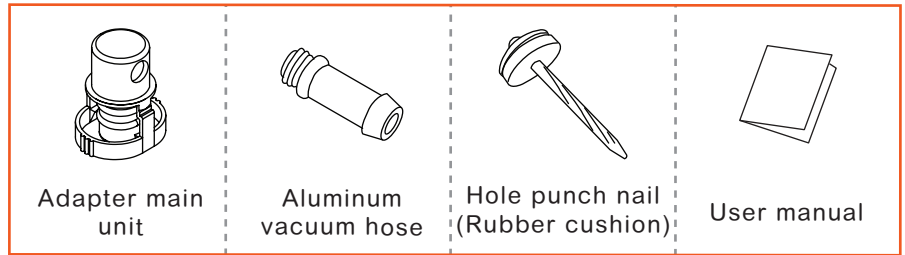
VAG EA888 GEN3 BOOST ADAPTER

Ver.0.0.1

SW40050

▶ CONTENTS

Only for reference, it might be different from real parts.



● Please include the user manual when transferring this product to others.

▶ FEATURES

Installed on the factory pre-cast port of the VAG EA888 GEN3 intake manifold.

Direct manifold pressure is obtained by drilling the reserved port, without affecting ECU accuracy or engine control logic.

Suitable for boost gauges, boost controllers, and water injection systems (WMI).

- Specifically designed for VAG EA888 GEN3 engines.
- CNC-machined aluminum alloy construction for high structural integrity.
- Anodized surface treatment for improved durability and corrosion resistance.
- Simple installation, suitable for DIY setup.
- Barbed vacuum fitting design helps prevent hose detachment under high pressure.

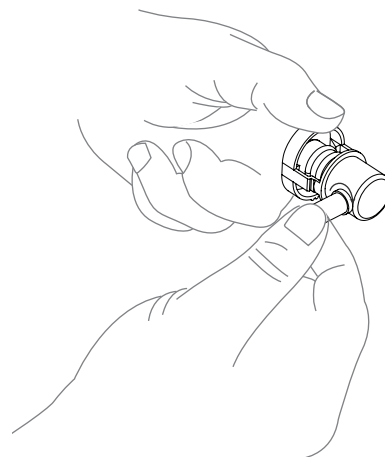
▶ INSTALLATION INSTRUCTION

Pre-installation Preparation

Ensure proper installation to prevent leaks and pressure errors.

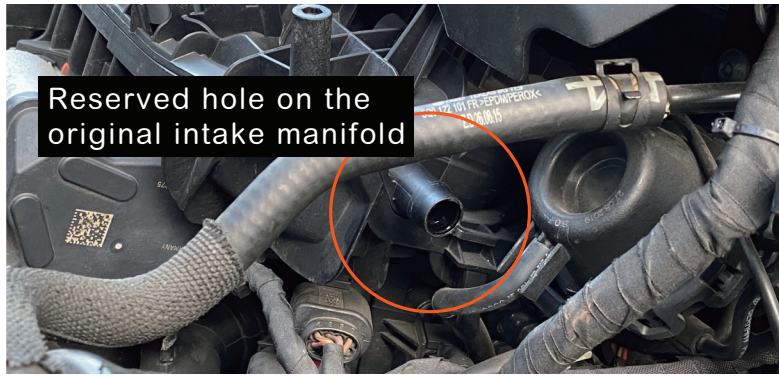


Apply Teflon tape or threadlocker to the aluminum pipe threads.

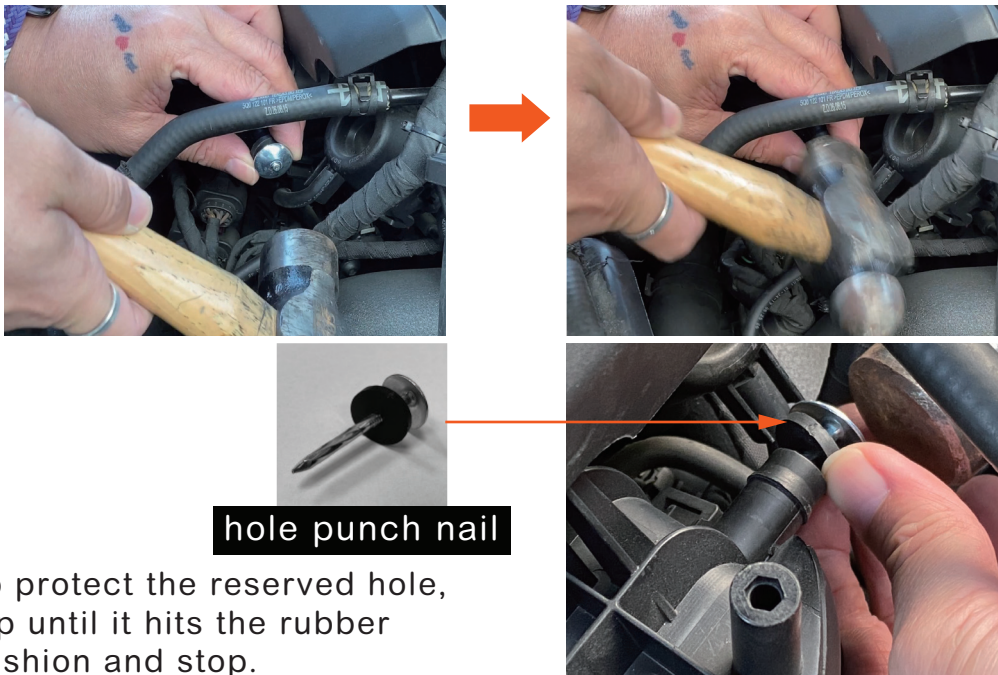


Tighten the adapter body clockwise; reinforce with tools if necessary.

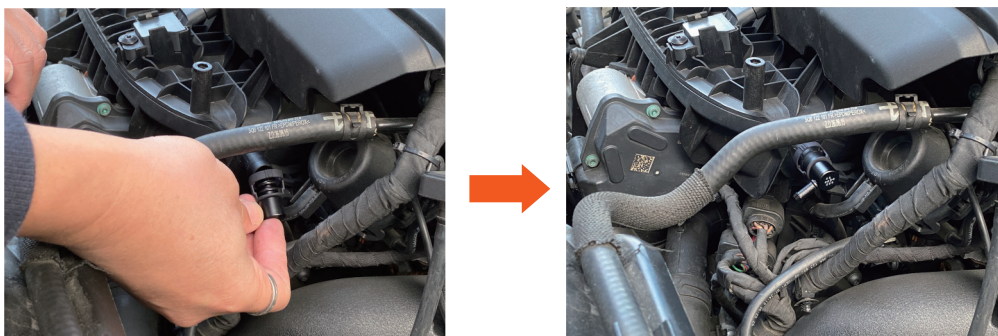
- 1 Open the hood to find the reserved hole on the original intake manifold.



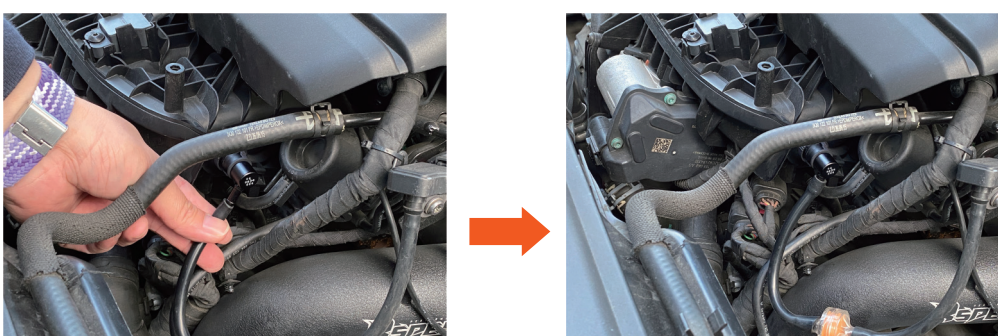
- 2 Insert the hole punch nail and tap a hole with a hammer (a rubber hammer is recommended).



- 3 Remove the hole punch nail and install the adapter.



- 4 Finish by connecting the vacuum tube.





Address: NO.163 Fan-Hwa Road, Chin-Hsin Village, Hsiu-Shui, Chang Hwa, TAIWAN
Tel: +886-4-7681140 Fax: +886-4-7698587 E-mail: info@autojaw.com

Copyright 1999-2026 AUTO JAW CO,LTD ALL Rights Reserved.

